

2014 highlights

2014: BY THE NUMBERS

476



Education Program
Participants

19



Cost share
grants awarded

10



Community
workshops

13



Waterbodies
monitored

13



Partner
organizations

9



WCA permits
approved



KEY PROJECT HIGHLIGHTS



E. COLI SOURCING AT LAMBERT CREEK

To understand the source of *E. coli* impairment in Lambert Creek and the best ways to reduce them, VLAWMO monitored and sourced the creek in 2014.



COMMUNITY BLUE

VLAWMO was awarded a Clean Water Fund Community Partners grant to install seven raingarden projects and foster relationships with 13 new community partners.



KEY PLANS & REPORTS

STRATEGIC PLAN: The Strategic Plan identified a priority list of new projects to accomplish through 2016.

IMPAIRED WATERS: The Total Maximum Daily Load (TMDL) Report studied high levels of bacteria in Lambert Creek and nutrients in five lakes. The TMDL Implementation Plan created an action plan to reduce pollution.

Looking ahead



10 YEAR WATER PLAN UPDATE

In 2015 VLAWMO will begin updating its 10 Year Water Plan.

We'll need your help to identify priority issues and projects, valuable programs, opportunities for improvement, potential partners, and how it will all be paid for.



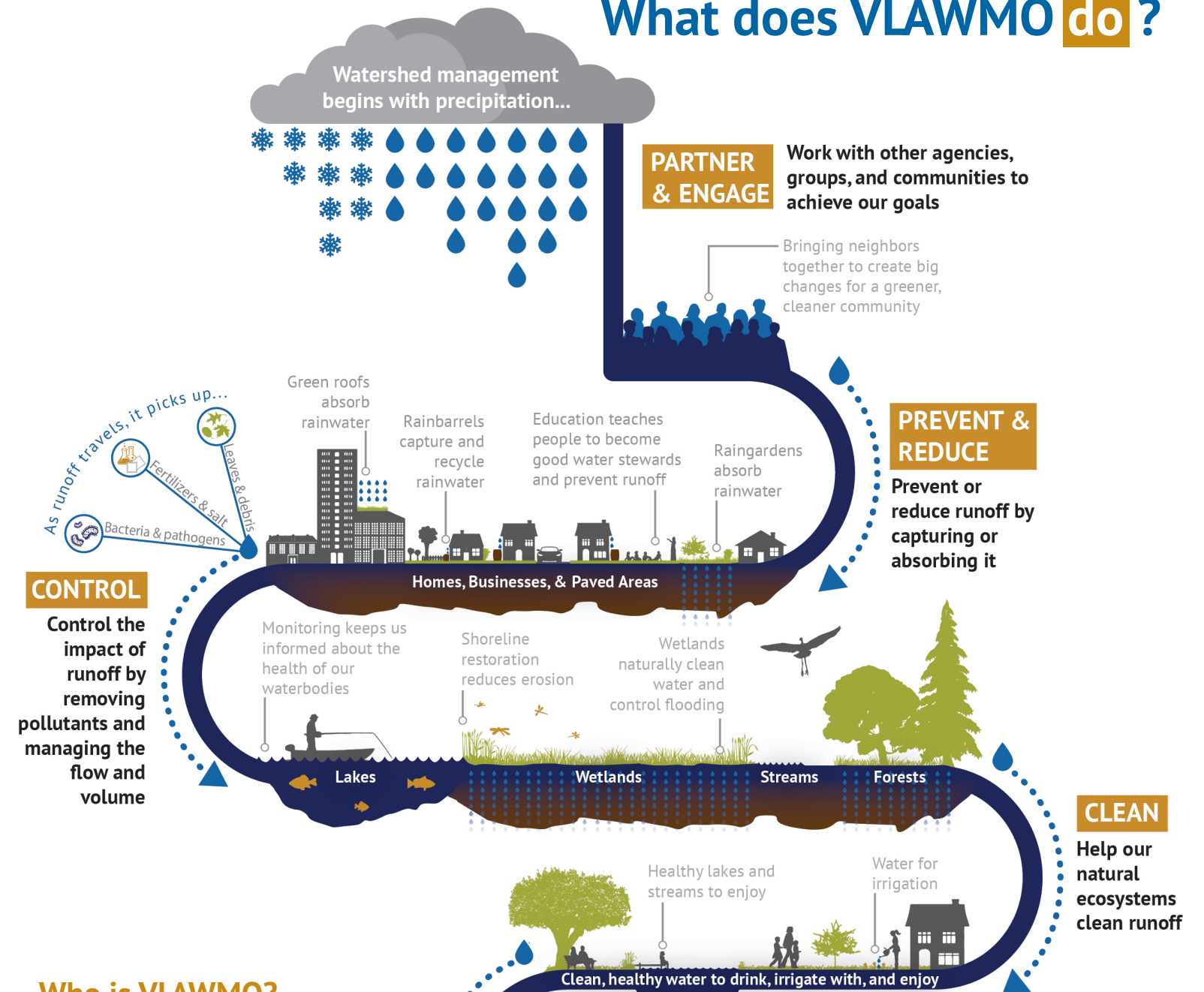
What can you do in 2015?

There are a lot of small things you can do that will make a big difference. From installing raingardens to volunteering, you can help us protect our important water resources!

Learn more about what you can do to help protect our water resources at vlawmo.org.

2014 Annual Report

What does VLAWMO do?

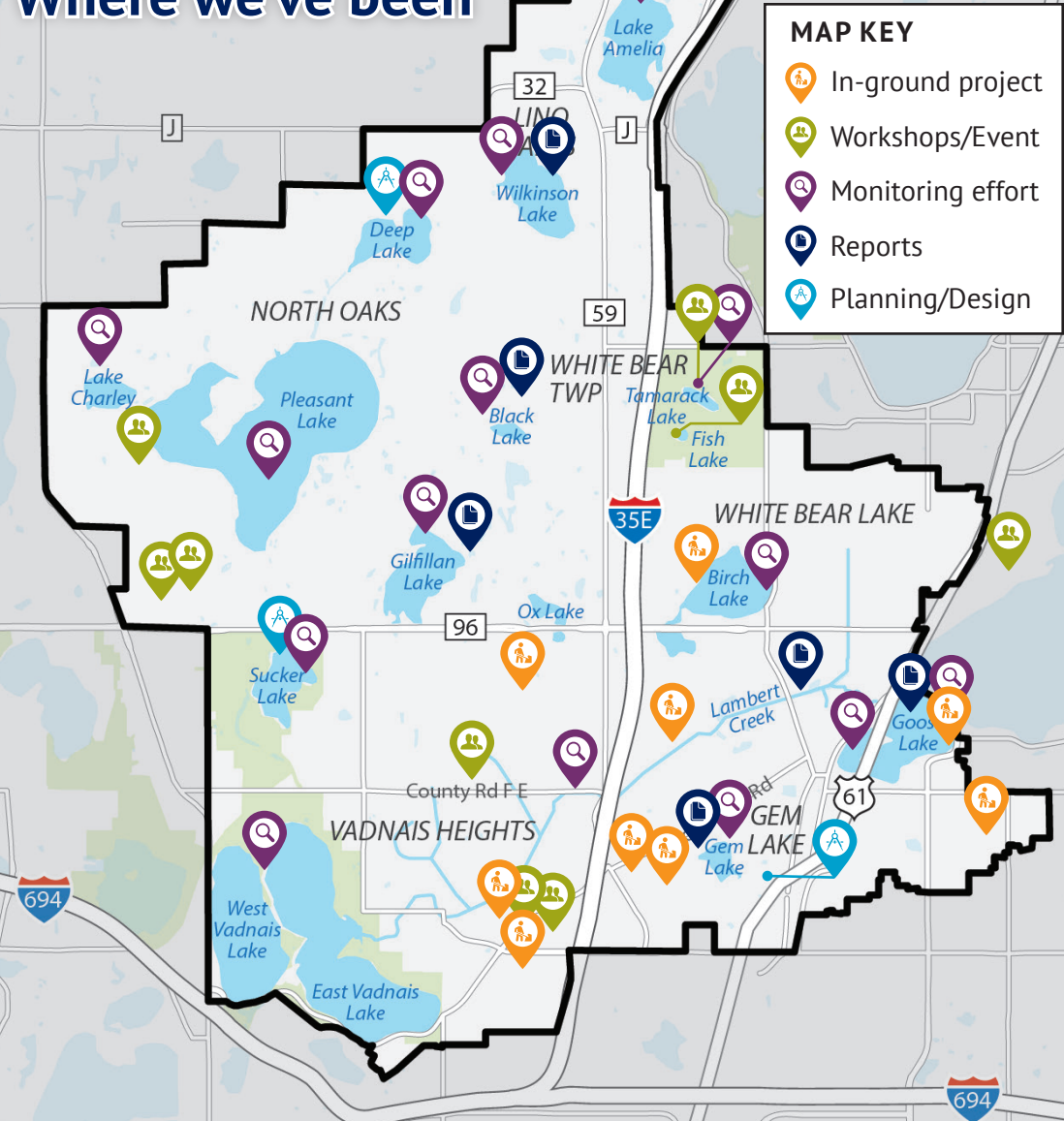


Who is VLAWMO?

Vadnais Lake Area Water Management Organization (VLAWMO) is a local governmental agency that uses sound science and strong partnerships to improve the impacts of stormwater in our watershed.



2014 Where we've been



Reducing Pollution 2014

VLAWMO and our Community Blue partners installed several **raingardens** in 2014 that made a big positive impact!

Total Phosphorus

3.3

lbs/yr

Volume

170k

cu ft/yr

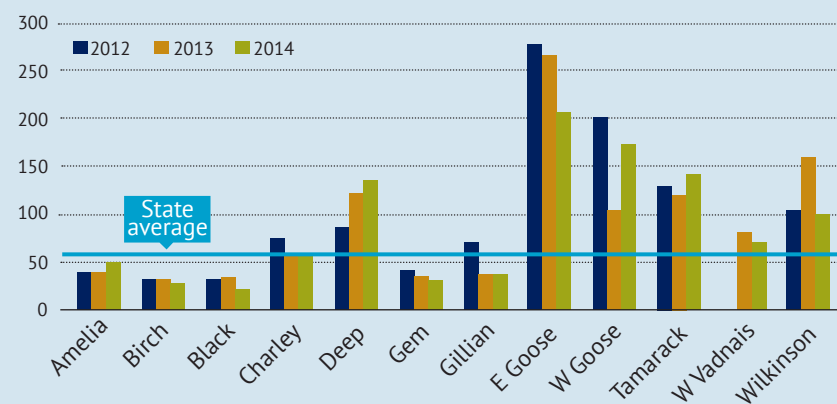
Sediment

1.6k

lbs/yr

☑ 1 lb of phosphorous feeds 500 pounds of algae

How our lakes are doing: Avg Lake Total Phosphorous (ug/L)



Elevated phosphorous levels lead to growth in algae populations, which can harm fish and plant life by consuming oxygen and blocking sunlight.

Staying busy

VLAWMO had an active 2014 with a strong base of ongoing programs and the completion of several key efforts.

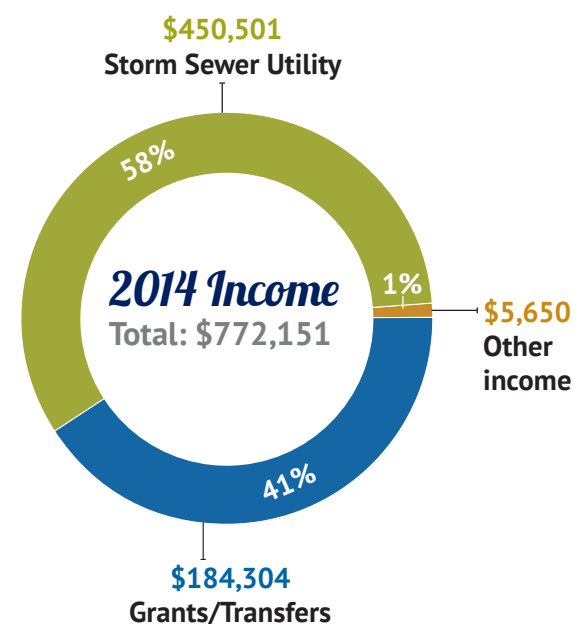


Spending wisely

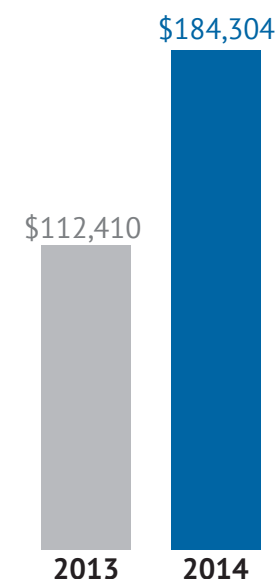
VLAWMO is committed to using resources responsibility for the greatest positive impact.

The 2014 budget was established by the Board of Directors in June 2013 with carry over project and program funds added in December 2014.

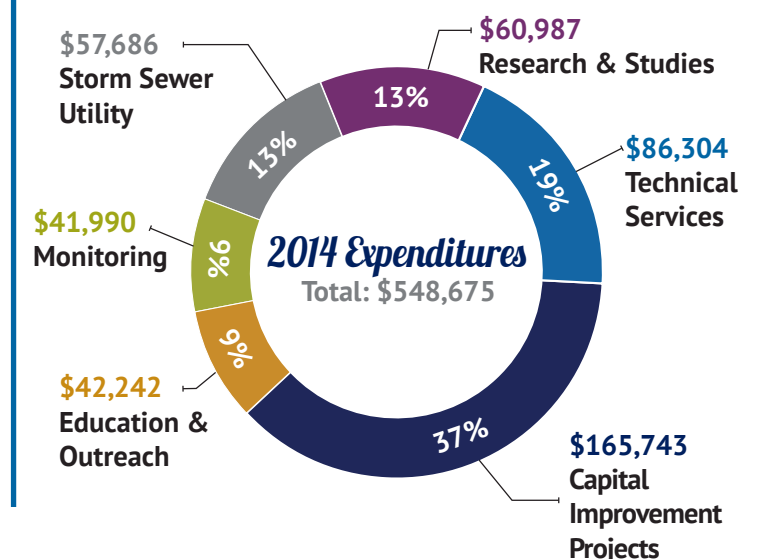
INCOME



Grant funding: 2013 vs 2014



EXPENDITURES



Working together to use resources wisely

Our partnerships in 2014 with organizations like St Paul Water Utility, Tamarack Nature Center, and MECA helped defray costs and enhance our reach and impact.